

# bennett trim tabs

## Trim Tabs

We know boaters are passionate about their boats. What drives us is helping them get the most out of their boating experience.

### Features

#### Performance

- Increase Speed
- Reduce Pounding
- Correct for Listing
- Eliminate Porpoising
- Offset Prop Torque

*Turn a teeth-jarring experience into a more comfortable ride.*

#### Efficiency

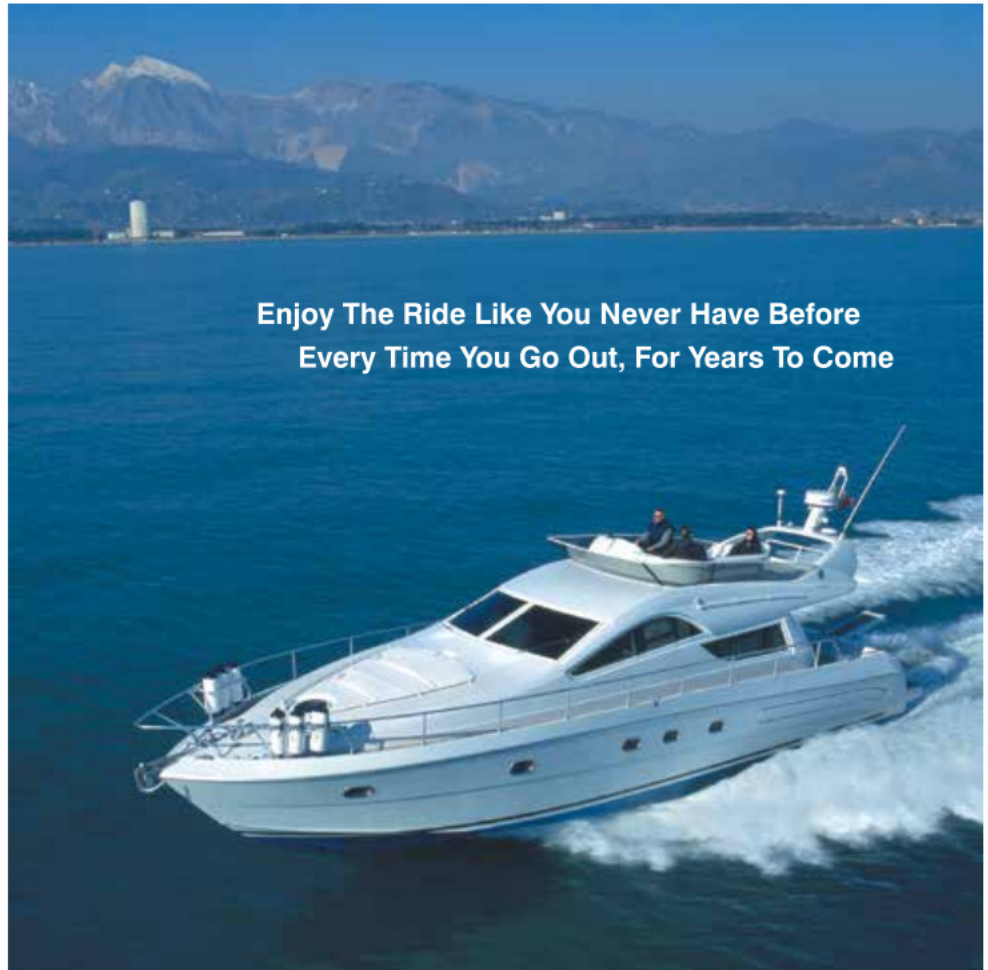
- Reduce Fuel Consumption
- Reduce Engine Laboring
- Eliminate Squatting

*Bennett Trim Tabs are one of the few boat accessories that can pay for themselves.*

#### Safety

- Improve Visibility
- Reduce Wake
- Improve Handling
- Reduce Hull Stress

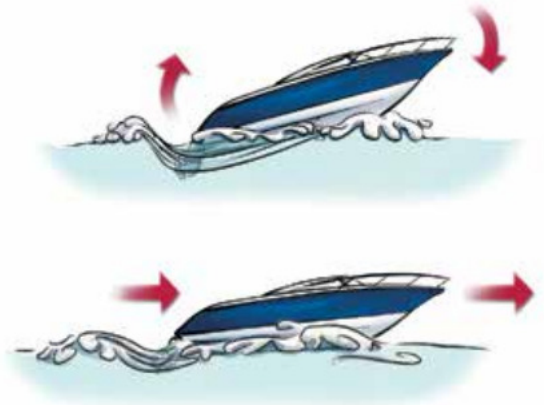
*Relax at the wheel thanks to greater control over your bow high position.*



## How Trim Tabs Work

Bennett Trim Tabs are two independent, stainless steel, adjustable after-planes attached to the bottom edge of the transom. They are designed to improve lift and stability, greatly enhancing the boating experience. When the helm control is pressed, the trim tabs move into position. Water force on the trim tab surface creates upward pressure, raising the stern and lowering the bow.

The principle is simple. The results are impressive.



# bennett trim tabs

## trim tab kits

### Trim Tab Kits

The right match between trim tab and boat is critical to achieve maximum performance. Trim tabs can be a boat designer's ally — if they fit the specifications of the boat. Bennett works with builders, engineers and designers to develop a trim tab system that allows the boat to operate as intended over a broader range of conditions.

### Modified Stainless Steel Trim Planes

Bennett Trim Tabs are made of high-quality 304 stainless steel and remain strong and rigid, even in the most challenging situations. The metal's advantage is that it can be sheared and bent to create a variety of shapes and levels of strength. Boat builders can have a custom tab built to their specifications without long manufacturing lead times.

### Special Configurations

Transoms come in all shapes and sizes, and space is often limited. Fortunately Bennett has solutions for design challenges like molded steps, integral swim platforms, exhaust outlet placement, stepped stern profiles, multiple deadrise angles at the transom, propeller tunnels and sophisticated pocket designs.

### Actuator Installation Flexibility

Bennett actuators are strong but flexible nylon/fiberglass hydraulic cylinders that push tabs into position. They allow for more variations in stroke than any trim tab system in the market — fitting almost any space a boat builder can design. Fluid flows through a concealed hole in the upper hinge at the top of the actuator, thus eliminating external hoses subject to damage.



### General Sizing Guidelines

Many factors affect the choice of properly sized trim tabs, and the ultimate responsibility for selection is up to the boat owner. Selection may vary based on power, engine configuration, weight distribution, type of boat, and use.

Boat Length	Engine Configuration	Trim Tab Size (span & chord)
15'-19' (4.5-5.8 m)	Single I/O, Single Outboard or Inboard	12" x 9" (30 x 23 cm)
17'-19' (5.2-5.8 m)	Single Outboard	8" x 10" (20 x 25 cm) M80
19'-24' (5.8-7.3 m)	Single I/O, Single Outboard, or Inboard	18" x 9" (46 x 23 cm)
19'-24' (5.8-7.3 m)	Limited Transom Space or Extra Lift	12" x 12" (30 x 30 cm)
20'-23' (6.0-7.0 m)	Single I/O or Single Outboard	10" x 12" (25 x 30 cm) M120
22'-27' (6.7-8.3 m)	Single I/O or Single Outboard	24" x 9" (61 x 23 cm)
22'-27' (6.7-8.3 m)	Twin I/O or Twin Outboard	18" x 12" (46 x 30 cm)
25'-30' (7.6-9.1 m)	Single I/O or Outboard	30" x 9" (76 x 23 cm)
25'-30' (7.6-9.1 m)	Limited Transom Space or Extra Lift	30" x 12" (76 x 30 cm)
25'-30' (7.6-9.1 m)	Twin I/O or Twin Outboard	24" x 12" (61 x 30 cm)
28'-34' (8.5-10.4 m)	Inboard	36" x 9" (91 x 23 cm)
28'-34' (8.5-10.4 m)	Limited Transom Space or Extra Lift	36" x 12" (91 x 30 cm)
28'-34' (8.5-10.4 m)	Twin I/O or Twin Outboard	24" x 12" (61 x 30 cm)
32'-38' (9.7-11.6 m)	Inboard	42" x 9" (107 x 23 cm)
32'-38' (9.7-11.6 m)	Limited Transom Space or Extra Lift	42" x 12" (107 x 30 cm)
36'-44' (11.0-13.4 m)	Inboard	48" x 9" (122 x 20 cm)
36'-44' (11.0-13.4 m)	Limited Transom Space or Extra Lift	48" x 12" (122 x 30 cm)
42'-50' (12.8-15.2 m)	Inboard	54" x 9" (137 x 23 cm)
50'-60' (15.2-18.3 m)	Inboard	54" x 12" (137 x 30 cm)
60'-65' (18.3-19.8 m)	Inboard	60" x 12" (153 x 30 cm)
65'-70' (19.8-21.3 m)	Inboard	66" x 12" (168 x 30 cm)
70'-80' (21.3-24.4 m)	Inboard	72" x 12" (183 x 30 cm)

NOTE Span = side to side measurement Chord = fore to aft measurement



# bennett trim tabs

## trim tab variations

### Trim Tab Variations

Many factors affect the choice of properly sized trim tabs, and the ultimate responsibility for selection is up to the boat owner. Selection may vary based on power, engine configuration, weight distribution, type of boat, and use. The greater the surface area, angle of deflection and/or speed of the water flowing under the trim tab, the greater the lift. To achieve maximum performance on your boat, Bennett offers more options than any other trim tab manufacturer. Since we are the manufacturer, we can customize trim plane assemblies based on your needs. Below are a few of our standard options. Check for availability and pricing. All sizes and variations are not shown below.



#### Standard Trim Tab

A standard Trim Plane Assembly (TPA) includes a trim plane, backing plate and hinge. A standard kit includes two TPAs, two actuators, a hydraulic power unit, and all necessary wiring, tubing and hardware. Installation is transom mount. Available in 9" and 12" chord lengths.



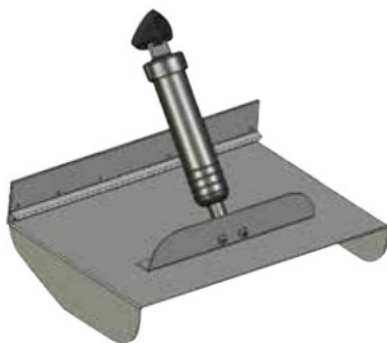
#### Bottom Mount

This installation is only used when the transom mount is not practical. It requires a flat bottom with no strakes or other protrusions. Often used for pocketed tabs.



#### Up Fins

An up fin is the upward bending of a trim plane's inboard and/or outboard edges. This engineering adds strength to the system by increasing the stiffness of the trim plane.



#### Drop Fins

A drop fin is the downward bending of a trim plane's inboard and/or outboard edges. Maximizes lift on longer chord trim planes — captures water pressure that would normally escape out the sides of the tabs and channels it aft.



#### Dual Actuator, Heavy Duty

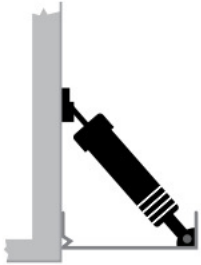
The HD series features heavy duty, 10-gauge stainless steel tabs, secured with a massive piano hinge. The tab is cut at an angle on one side to accommodate limited transom space from multiple outboards. Dual actuators on each tab absorb shock during high speed impact with the water.

# bennett trim tabs

## trim tab kits

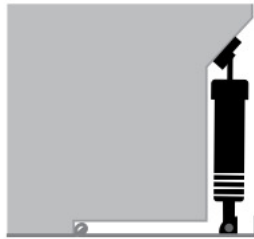
### Meet your match

No one has more options to suit your needs



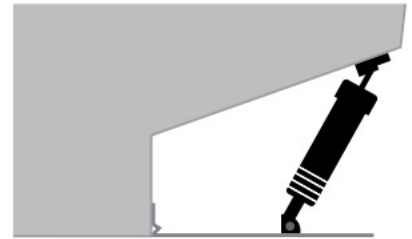
#### Standard Installation

Upper hinge of actuator positioned against the transom.



#### Vertical Installation

Though trim tabs are most effective when extended aft from the transom, pockets present an integrated appearance and can easily accommodate Bennett Trim Tabs. The trim plans can be bottom mounted (see Vertical, above left), or standard mounted (see Reverse, above right) and the actuator repositioned to fit into the recesses in the hull. This is a popular installation for sport fishing, as the tabs won't get in the way of fishing lines and fish brought to the transom for boarding.



#### Reverse Installation

### Actuator Flexible Upper Hinge



### Actuator Variations



#### Standard Actuator

As shown, retracted length is 13 3/4" with a standard stroke of 2 1/2". Stroke can be modified to meet unique specifications.



#### Short & Extra Short Actuator

An alternative to the Standard Actuator, for installations where space is limited. Short retracted length is 11 3/4" with a standard stroke of 2 1/2". Extra Short retracted length is 10 5/8" with a standard stroke of 2 1/2". Stroke can be modified.



#### External Line Actuator

Used in cases of total inaccessibility inside the transom. Unlike the Standard Actuator, the external line hydraulics enter the transom by means of external tubing above the waterline.

# bennett trim tabs

## trim tab kits

### Complete Trim Tab Kits with Euro-Style Rocker Switch Control

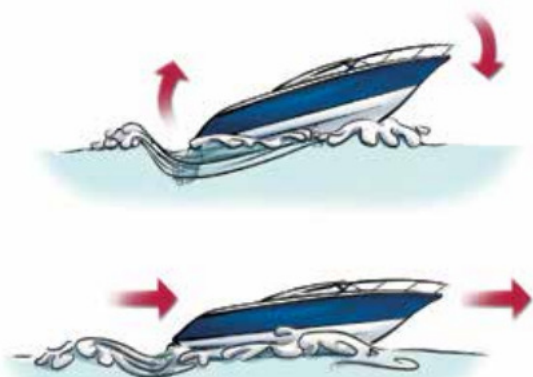
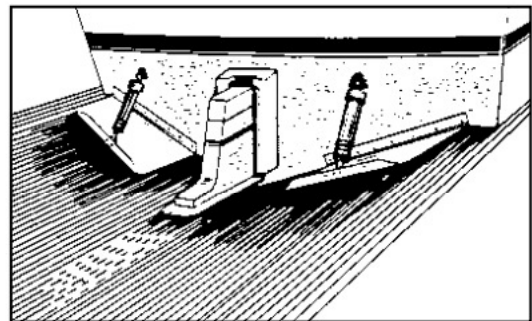
Decrease the time in "transition mode" between displacement and planing. Reduce fuel consumption, laboring of engines, hull stress, wake and pounding. Eliminate squatting, listing and porpoising. Increase speed and improve visibility and handling. Standard trim tab package contains two stainless steel trim tabs, two actuators, a hydraulic power unit, all necessary wiring, tubing, hardware and installation instructions. Includes Euro-Style Rocker Switch Control. All sets are with Standard Transom Mount.



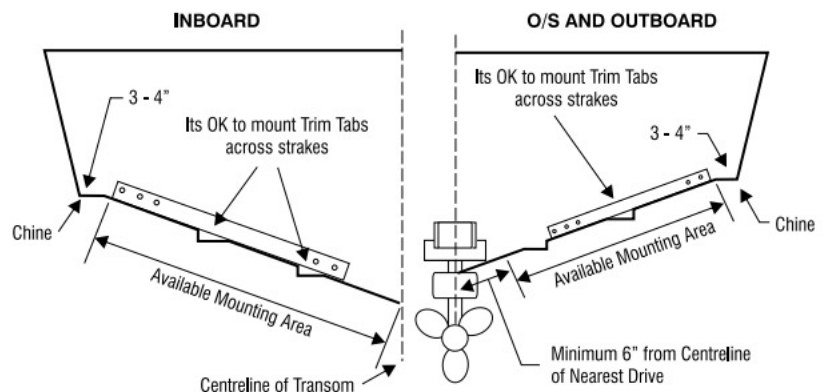
### Standard Trim Tab Kits Specification

Part Number	Trim Tab Size
499/001	12" x 9" Trim Tab System (10" x 9" available)
499/002	18" x 9" Trim Tab System
499/004	24" x 9" Trim Tab System
499/005	30" x 9" Trim Tab System
499/006	36" x 9" Trim Tab System
499/006/1A	42" x 9" Trim Tab System
499/006/1B	48" x 9" Trim Tab System
499/009/5	54" x 9" Trim Tab System
499/000	12" x 12" Trim Tab System
499/052	18" x 12" Trim Tab System (14" & 16" x 12" available)
499/006/24	24" x 12" Trim Tab System (20" & 22" x 12" available)
499/005/1	30" x 12" Trim Tab System
499/006/12/1	36" x 12" Trim Tab System
499/007	42" x 12" Trim Tab System
499/008	48" x 12" Trim Tab System - Dual Actuator per Tab
499/009	54" x 12" Trim Tab System - Dual Actuator per Tab
499/009/6	60" x 12" Trim Tab System - Dual Actuator per Tab
499/009/7	66" x 12" Trim Tab System - Dual Actuator per Tab
499/009/2	72" x 12" Trim Tab System - Dual Actuator per Tab

These sizing recommendations are based on average performance. When making a choice between trim tab sizes, remember that *the largest trim tabs that will fit on the transom will be the most efficient.*



### Installation Guide





# bennett trim tabs

## trim tab kits

### M80 and M120 Sports Tab Systems



Bennett's M80 and M120 Sport Tabs are ideal for trailered boats in the 17' - 23' range. Their unique Batwing design provides 30% more lift than conventional trim tabs and their space-saving design ensures easy installation on virtually any transom. Trim tab kits include two stainless steel trim tabs, two actuators, a hydraulic power unit, all necessary wiring, tubing, hardware and installation video. Includes Euro-Style Rocker Switch Control.

Part Number	Trim Tab Size
-------------	---------------

499/M80	8" x 10"
---------	----------

499/M120	10" x 12"
----------	-----------

### Performance Sports Tabs



The Sport Tab series is engineered for the demands of offshore attitude correction over a wide range of water conditions. For speeds up to 60 mph. Features two heavy duty stainless steel tabs with powder-coated black finish, secured with heavy duty mounting plates and fasteners. The ST12 and ST16 Sport Tabs are deflected and held firmly in position by dual actuators on each tab. Kit also includes hydraulic power unit, and all necessary wiring, tubing and hardware. Includes Euro-Style Rocker Switch Control.

Part Number	Trim Tab Size
-------------	---------------

499/ST12	12" x 12" - Dual Actuator
----------	---------------------------

499/ST16	12" x 16" - Dual Actuator
----------	---------------------------

### Tournament Tab Kits



High bow on take-off, pounding, porpoising and excessive use of the engine's power trim are common factors reducing the efficiency of high-performance fishing boats. You may also find yourself needing a high throttle setting just to stay on plane. With a unique Batwing design and a high-tech, black powder-coated finish, Tournament Tabs are engineered to fit your small boat. They increase stability, versatility and overall performance, helping your boat run on plane in shallow water — even at slower speeds. Tournament Tabs are hydraulically adjustable, putting total attitude control at your fingertips. Includes Euro-Style Rocker Switch Control.

Part Number	Trim Tab Size
-------------	---------------

499/021	8" x 10"
---------	----------

499/022	10" x 12"
---------	-----------

### Heavy Duty Tab Kits



The HD series features heavy duty, 10-gauge stainless steel tabs, secured with a massive piano hinge. On the HD16, the tab is cut at an angle on one side to accommodate limited transom space from multiple outboards. Dual actuators on each tab absorb shock during high speed impact with the water. Includes Euro-Style Rocker Switch Control.

Part Number	Trim Tab Size
-------------	---------------

499/HD13	12" x 13"
----------	-----------

499/HD16	12" x 16"
----------	-----------

# bennett self-leveling tabs

## trim tab kits

### Self-Leveling Tabs for Small Boats

#### Good things come in small packages.

Now you can have the durability of a Bennett trim tab system with a simple, quick and easy installation.

There is nothing to do inside the boat – only the mounting of two actuators and two tabs at the transom. It's an affordable, simple solution for small boats from 10 to 18 ft (3 m to 5.5 m).

The SLT uses some of the same high-quality, proven materials and durable design used in Bennett standard hydraulic systems for more than 50 years.

Quick and easy installation – no template needed!

You can change the position of the actuator with adjustable mounting options that are available on the trim tab.

#### Your SLT kit includes:

- 14 gauge stainless steel tabs with Bennett's exclusive interlocking hinge
- Strong and flexible composite actuators
- All stainless steel hardware – no plastic!
- Bennett's no-hassle 5-year warranty



#### Small Price Tag, Big Benefits!

- Increase top speed
- Get on plane quickly
- Plane at lower speeds
- Reduce engine laboring
- Improve fuel efficiency
- Improve your hole shot
- Eliminate porpoising and chine walking
- Reduce pounding

#### Bennett SLT

Part Number	Tab Size	Boat Size
499/SLT6	15 cm x 20 cm	3 m x 4.5 m
499/SLT10	25 cm x 25 cm	4.6 m x 5.5 m



499/SLT6



499/SLT10



# bennett trim tabs

## trim plane and actuators

### Accessories

#### Trim Plane Assemblies (Includes Tab and Mounting Plate)

Bennett trim planes are made of high quality 304 stainless steel and remain strong and rigid, even in the most challenging situations. Each trim plane assembly includes a trim plane, backing plate and hinge for one side of the boat.



##### Part Number Description

499/201	12" x 9" Standard (10" x 9" available)
499/202	18" x 9" Standard
499/203	24" x 9" Standard
499/204	30" x 9" Standard
499/205	36" x 9" Standard
499/206/9	42" x 9" Standard
499/207/9	48" x 9" Standard
499/209	54" x 9" Standard
499/201/12	12" x 12" Standard
499/202/11	18" x 12" Standard
499/203/12	24" x 12" Standard
499/204/12	30" x 12" Standard
499/205/12DA	36" x 12" Standard
499/206	42" x 12" Standard
499/207	48" x 12" Standard
499/208	54" x 12" Standard

NOTE All Trim Plane Assemblies (TPA) are Transom Mount. Trim Plane Only (TPO) are 2/3 of the TPA Price. Mounting Plates (MP) are 1/3 of the TPA Price. (Backing Plate/Hinge Plate)

#### For Tournament Tabs and Heavy Duty Tabs

##### Part Number Description

499/221	TPA 8" x 10" Tournament Tab
499/223	TPA 10" x 12" Tournament Tab
499/TPAHD13	12" x 13" Heavy Duty Tab
499/TPAHD16P	12" x 16" Heavy Duty Tab – Port
499/TPAHD16S	12" x 16" Heavy Duty Tab – Starboard

#### For Sports Tabs

499/TPAM80	Trim Plane Assembly 8" x 10" for M80
499/TPAM120	Trim Plane Assembly 10" x 12" for M120
499/211	Trim Plane Assembly 12" x 9" for ST9
499/212	Trim Plane Assembly 12" x 12" for ST12
499/213/1	TPA 12" x 16" ST16 – Port
499/213/2	TPA 12" x 16" ST16 – Starboard

### Bennett Actuator Assemblies and Parts

Bennett actuators are strong but flexible nylon/fiberglass hydraulic cylinders. The piston-like arms push tabs into position. Fluid flows through a concealed hole in the upper hinge at the top of the actuator — thus eliminating external hoses subject to damage.

- A1101A is the standard.
- A1101EX is an external line connection actuator used in cases of total inaccessibility inside the transom. Unlike the standard actuator, the external line hydraulics enter the transom by means of external tubing above the waterline.
- A1200S is designed for installations where space is limited.

##### Part Number Description

499/351	Actuator Assembly (standard 13 3/4" overall length)
499/351RC	Actuator Assembly (standard 13 3/4" overall length) with Rivet Clearance Lower Hinge
499/351EX	Actuator Assembly – External Line – (standard length)
499/318	Upper Hinge
499/318E	Upper Hinge - External Line
499/323	Lower Hinge
499/322	Lower Hinge Pin
499/A1120	Actuator Upper Hinge "O" Ring
499/A1121	Actuator Piston "O" Ring
499/352	Actuator Assembly – Small Version (11 3/4" overall length)
499/352RC	Actuator Assembly – Small Version (11 3/4" overall length) w/ Rivet Clearance Lower Hinge
499/352/S	Actuator Assembly - Extra Short (10 5/8" overall length)
499/352SRC	Actuator Assembly - Extra Short (10 5/8" overall length) w/ Rivet Clear Lower Hinge



499/352RC



499/351EX



499/323



499/318



# bennett trim tabs

## switches and gauges

### Auto Tab Control



Interacts directly with your trim tab system to automatically monitor and maintain the perfect cruising attitude. Calculating more than a thousand attitude readings per second, the newly redesigned ATC adjusts trim tabs to changes in vessel speed, sea conditions and shifting weight. Result is an optimum ride and significant fuel savings.

Part Number	Description
<b>499/AC3000</b>	Auto Tab Control Kit
<b>499/AC3000A</b>	Auto Tab Control System Bridge

### Euro-Style Rocker Switch



This control is ergonomically designed, water resistant and provides a positive "click" when the trim tabs are engaged. Its lock-out feature prevents user from pressing down on opposite directions at the same time. The control is easy to install, fitting into any existing Bennett 2 1/2-inch Rocker Switch hole. Comes with a 20" cable.

Part Number	Description
<b>499/ES2000</b>	Euro-Style Waterproof Rocker Switch
<b>499/ES2000A</b>	Euro-Style Waterproof Rocker Switch for Bridge (w/ 20' wire harness)

### Analogue Tab Gauges - Round Displays



Compact and economical way to show trim tab position. Use two gauges side by side. Gauges work for dual station installations.

Part Number	Description
<b>499/105</b>	Tab Gauge Kit (2 displays)
<b>499/105/24</b>	Tab Gauge Kit (2 displays) – 24V
<b>499/105/5</b>	Tab Gauge Kit for Bridge (4 displays)
<b>499/105/5/25</b>	Tab Gauge Kit for Bridge (4 displays) – 24V
<b>499/105/1</b>	Tab Gauge Kit for Bridge (4 displays) w/Complete Actuators
<b>499/105/1/</b>	Tab Gauge Display Tab Gauge Display – 24V
<b>499/105MB</b>	Tab Gauge Mounting Bracket

# bennett trim tabs

## accessories

### Electronic Indicator Control

Three features combined into one sophisticated control — the popular Bennett Rocker Switch Control, Trim Tab Indicator and the Auto Tab Retractor. Water resistant, highly accurate and features variable intensity LEDs for night or day. Features a relay module mounted near the transom, which simplifies installation by reducing the number of wires to run to the helm.



Part Number	Description
<b>499/EIC5000</b>	Electronic Indicator Control (EIC) – 12V
<b>499/EIC50002</b>	Electronic Indicator Control (EIC) – 24V
<b>499/EIC5000A</b>	Dual Station EIC Kit – 12V
<b>499/EIC5000A2</b>	Dual Station EIC Kit – 24V
<b>499/EIC5000INT</b>	EIC – 12V No Cables or Sensor Wires
<b>499/EIC50002INT</b>	EIC – 24V No Cables or Sensor Wires
<b>499/EIC5000AINT</b>	Dual Station EIC Kit – 12V No Cables or Sensor Wires
<b>499/EIC5000A2INT</b>	Dual Station EIC Kit – 24V No Cables or Sensor Wires
<b>499/EIC001</b>	EIC Control/Display Only
<b>499/EIC101</b>	EIC RM12
<b>499/EIC102</b>	EIC RM24
<b>499/EIC201</b>	EIC Main Cable – 20 ft Standard Length
<b>499/EIC20125</b>	EIC Main Cable – 25ft length
<b>499/EIC20130</b>	EIC Main Cable – 30ft length
<b>499/EIC20135</b>	EIC Main Cable – 35ft length
<b>499/EIC20140</b>	EIC Main Cable – 40ft length
<b>499/EIC301</b>	EIC Lower Display Cable 4ft Standard Length
<b>499/EIC401</b>	EIC Sensor Wire Pigtail Pack

Part Number	Description
<b>499/EIC501</b>	EIC Hardware Pack for 1st station
<b>499/EIC601</b>	EIC Hardware Pack for 2nd station
<b>499/EIC701</b>	EIC Bridge Junction Box
<b>499/EIC801</b>	EIC Bridge Upper Display Cable 20 ft Standard Length
<b>499/EIC80125</b>	EIC Bridge Upper Display Cable – 25ft length
<b>499/EIC80130</b>	EIC Bridge Upper Display Cable – 30ft length
<b>499/EIC80135</b>	EIC Bridge Upper Display Cable – 35ft length
<b>499/EIC80140</b>	EIC Bridge Upper Display Cable – 40ft length
<b>499/EIC901P</b>	Upper Hinge w/10ft red sensor wire and plug – Standard Length
<b>499/EIC901P15</b>	Upper Hinge w/15ft red sensor wire and plug
<b>499/EIC901P20</b>	Upper Hinge w/20ft red sensor wire and plug
<b>499/EIC901S</b>	Upper Hinge w/10ft green sensor wire and plug – Standard Length
<b>499/EIC901S15</b>	Upper Hinge w/15ft green sensor wire and plug
<b>499/EIC901S20</b>	Upper Hinge w/20ft green sensor wire and plug

### Tab Position Indicator

Attractive, compact, water resistant and easy to install. The TPI helm display accurately shows deflection percentage of each trim tab, and the LED brightness is adjustable for any lighting condition. Works with all Bennett Trim Tabs.



Part Number	Description
<b>499/TPI2000</b>	TPI2000 Tab Position Indicator Kit (TPI) – 12V & 24V
<b>499/TPI2000B</b>	TPI2000B Dual Station TPI Kit – 12V & 24V
<b>499/TPIAB</b>	TPIAB Bridge Display Only w/20ft wire (Note: Longer wire available)
<b>499/TPIDISPLAY</b>	TPIDISPLAY TPI Display Only
<b>499/TPIBWHB</b>	TPIBWHB Bridge Wire Cable Bulk (cost per foot)
<b>499/H1170ATPI</b>	H1170ATPI Hardware Bag for 1st station
<b>499/H1170BTPI</b>	H1170BTPI Hardware Bag for 2nd station
<b>499/CC 3003P</b>	CC 3003P Actuator Upper Hinge with Coil – Port (red) 30ft
<b>499/CC 3003S</b>	CC 3003S Actuator Upper Hinge with Coil – Starboard (green) 30ft
<b>499/A1101CP</b>	A1101CP Complete Actuator w/ sensor wire – Port (red) 30ft
<b>499/A1101CS</b>	A1101CS Complete Actuator w/ sensor wire – Starboard (green) 30ft
<b>499/CCSCR</b>	CCSC R Red Shielded Cable (per foot)
<b>499/CCSCG</b>	CCSC G Green Shielded Cable (per foot)

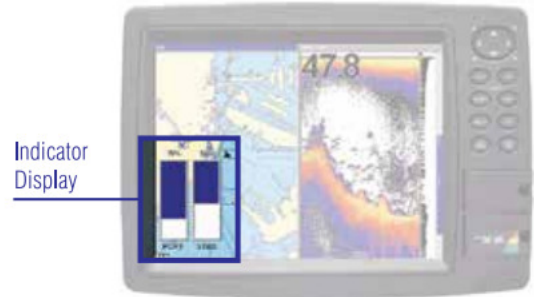


# bennett trim tabs

## accessories and hardware

### NMEA 2000 Indicator Kit

Compatible with NMEA 2000® compliant electronics. See the position of your trim tabs on your NMEA 2000 compatible multi-function display or gauge, GPS/chartplotter or sonar. The kit comes with Bennett Trim Tab sensors, interface module and NMEA compliant connectors. Screw on the new upper hinge with sensor. Drill hole for sensor wire. Connect to NMEA 2000 Cable. Kit includes Device Net Connectors. Gauge not included.



Part Number	Description
499/NMEA1	NMEA1 NMEA1 Indicator Kit
499/NMEA201	NMEA201 NMEA Interface Module Only
499/NMEA301	NMEA301 NMEA Backbone Tee Connector



Screw on the new upper hinge with sensor.



Drill hole for sensor wire.

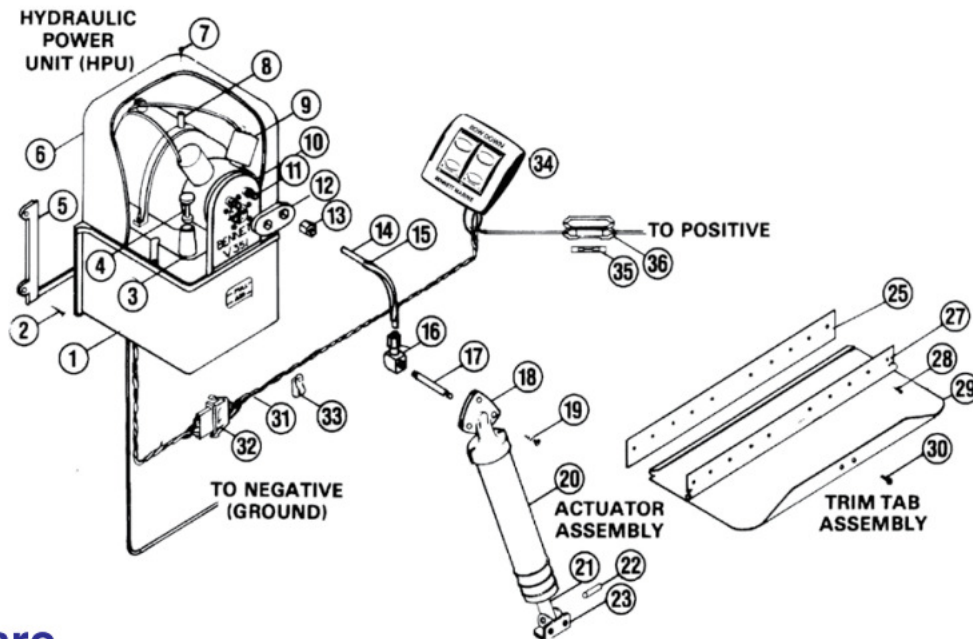


Connect to NMEA 2000 Cable. Kit includes Device Net Connectors.



# bennett trim tabs

## accessories and hardware



## Hardware

Part Number	Description
1 499/301	VP1139 Fluid Reservoir
4 499/304	VP1140 Filler Plug
5 499/305	H1179 Mounting Bracket for HPU
6 499/306	VP1138 Lexan Cover
8 499/308	VP1142 Motor Strap
9 499/309	VP1135R Solenoid Valve – Red Wire
9 499/309R24V	VP1135R24V Solenoid Valve – Red Wire – 24V
9 499/309G	VP1135G Solenoid Valve – Green Wire
9 499/309G24V	VP1135G24V Solenoid Valve – Green Wire – 24V
12 499/312	Hex Retainer
13 499/313	T1127 Nut with Ferrule

Part Number	Description
14 499/314	T1125-20 Hydraulic Tubing – 20 foot coil
14 499/314/1	T1125 – Bulk Longer Hydraulic Tubing – Cost per foot over 20'
15 499/H1173	H1173 Tube Bending Clip
16 499/316	H1172 Female Elbow
17 499/317	H1171-3 Pipe Nipples – 3" 12", 4" and 5" also available)
18 499/318	A1103 Upper Hinge
18 499/318E	A1103EX Upper Hinge with External Line
19 499/319	H1174 #14 x 1-1/2" Full Threaded Screw (Upper Hinge Fastener)
22 499/322	Lower Hinge Pin
23 499/323	Lower Hinge
31 499/331	WH1000 Wire Harness – 22 feet
34 499/ES2000	ES2000 Euro-Style Rocker Switch Control

## Retention Device

Constructed from 304 Grade Stainless Steel, the retention device is designed to take the load off the actuator when reversing down on game fish. A must for serious fishing boats.

Part Number	Description
499/RD001	Retention Device (per pair)



## Other Hardware

Part Number	Description
499/313/1	Brass Line Tee Fitting
499/H1170A	Hardware Pack (Trim Tab Hydraulic Hardware)
499/H1170B	Dual Actuator Hardware Pack
499/VP1159	Valve Seat w/ "O" Ring



# bennett trim tabs

## hardware

### Hydraulic Power Unit



A compact powerhouse that creates hydraulic pressure to lower and raise the trim tabs. It employs two solenoid valves to direct the flow of fluid to the actuators. The solenoid valves lock tightly to secure the tabs in place. Strength to lower and hold even the largest tabs in place. Lexan cover protects electrohydraulic unit from occasional wash down and translucent reservoir allows fluid check at a glance. Installs easily with sturdy mounting bracket. Measures 4" x 7 1/2" x 5 1/2". Uses automatic transmission fluid. Includes pump, solenoid valves, reservoir and cover.

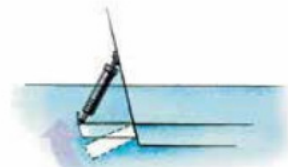
Part Number	Description
<b>499/361</b>	Hydraulic Power Unit – 12 Volt
<b>499/362</b>	V351HPU2 Hydraulic Power Unit – 24 Volt
<b>499/041</b>	V351HUC1E Hydraulic Unit Complete 12V – with Euro-Style Rocker Switch Control
<b>499/041/2</b>	V351HUC2E Hydraulic Unit Complete 24V – with Euro-Style Rocker Switch Control
<b>499/042</b>	V351HUCDE1 Hydraulic Unit Complete Dual Cylinders – with Euro-Style Rocker Switch Control
<b>499/DAHPU1</b>	DAHPU1 Dual Acting Hydraulic Power Unit — 12V
<b>499/DAHPU2</b>	DAHPU2 Dual Acting Hydraulic Power Unit — 24V

### Auto Tab Retractor



Automatically retracts tabs when boat's ignition is turned off. Trailered or dry storage boats have added defense from trim tab damage with them "full-up" during hauling, trailering and storage. Ensures trim tabs are all the way up every time boat is started if boat is not equipped with trim tab indicators. Easily installed under the instrument panel, the ATR connects to the trim tab control and engine ignition switch.

Part Number	Description
<b>499/103</b>	Auto Tab Retractor 12 Volt
<b>499/103/24</b>	AR524 Auto Tab Retractor 24 Volt



### Relay Module



A Relay Module reduces voltage drop in Trim Tab Systems with longer wire runs. With the older trim tab controls, RT1000 and RS1000, the Relay Module also functions as an Interrupter Relay and will prevent a fuse from blowing if Bow Down and Bow Up are inadvertently pressed at the same time.

Part Number	Description
<b>499/RM12</b>	RM12 Relay Module 12 V
<b>499/RM24</b>	RM24 Relay Module 24 V

## SST

A comprehensive trimming system that meets the demands of the 50-foot (16-meter) to 150-foot (46-meter) large yacht market. Also available for sport fishing, commercial and military applications.

### Included with all SST Systems:

- Choice of Three Indication Systems, all with internal sensors so no wires or cables exposed to the harsh marine environment.
- Euro-Style Rocker Switch Control (Es2000), that is ergonomically designed, waterproof and easy to install into a single 5cm hole.
- Patented Auto Tab Retractor, which automatically retracts tabs to the full-up position when ignition is turned off, minimising marine growth on the actuator shafts.

### SST Systems Components

- Two High-Pressure, Compact Hydraulic Power Units**, either single acting or dual acting pumps.
- 304 Stainless Steel Actuators**, Single or Dual Acting (with no external lines); CNC-machined precision; either single or dual cylinder; 8cm stroke; no dissimilar metals used so they are not susceptible to galvanic corrosion.
- 7-gauge (4.5mm), 304 Stainless Steel, Heavy Duty Trim Planes**, with an exclusive interlocking 10-gauge (3.6mm) hinge that is not welded and not susceptible to corrosion.

