

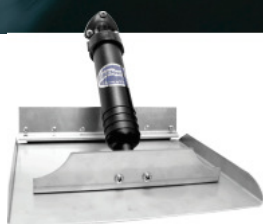
BENNETT



MARINE



Exceptional trim tab and hatch lift systems. **Unmatched boater satisfaction.**



*Since 1960*





# EXPERIENCE THE ADVANTAGE

For over half a century boaters have enjoyed the tangible benefits of Bennett Marine's exceptionally durable and dependable marine products.

We're proud to say, boaters trust our brand. After all, we invented the world's first adjustable trim tab—and never stopped pushing forward, always striving to make better, more affordable systems with maximum performance.

Experience the Bennett Advantage—Get Bennett on Board and Enjoy the Ride!

**Reduce Bow Rise, Improve visibility, Correct listing.**





# NCE TAGGE

## Contents

- 4** BOLT Electric Trim Tab Kits
- 5** BOLT Conversion Kits
- 6** Standard (Classic) & Sport Hydraulic Trim Tab Kits
- 7** Performance & Premier Hydraulic Trim Tab Kits
- 8-9** Helm Controls
- 10** Actuators & Trim Planes (Tabs)
- 11** Self-Leveling Trim Tabs & Hatch Lifters
- 12-13** Common Replacement Parts & Accessories



4



5



6



7



8-9



10



11



12-13

# BOLT Electric Trim Tab Kits

## BOLT Electric Trim Tab Kits (12V)

CONTROLS SOLD SEPARATELY



Balance loads, plane faster, increase efficiency and performance with Bennett Bolt Electric Trim Tab Systems, built to outlast any electric trim tab system on the market.

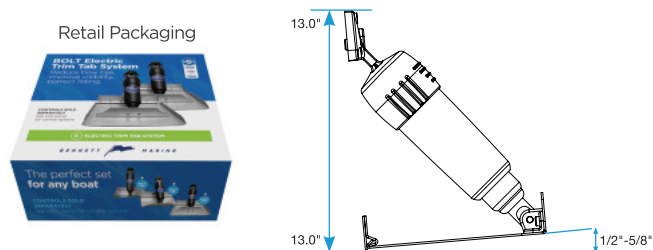
### Kits Include:

- (2) 12-volt fixed upper hinge actuators with 6ft. wire harnesses and waterproof connectors (BEA2000)
- (2) Stainless steel trim planes (tabs) and mounting plates
- (2) 20ft. wire harnesses with waterproof connectors (BAW2020)

PN#	SPAN/CHORD	*TAB	RETAIL BOX
BOLT124	12"x4"	(T)	✓
BOLT129	12"x9"	(T)	✓
BOLT189	18"x9"	(T)	
BOLT249	24"x9"	(T)	
BOLT1212	12"x12"	(R)	✓
BOLT1812	18"x12"	(R)	
BOLT2412	24"x12"	(R)	

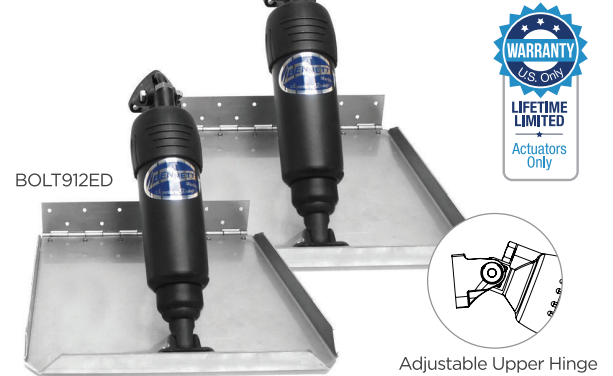
### Features Include:

- Completely sealed upper hinge with no exposed wires
- Superior seal design inspired by over 50 years of Bennett's proven success in actuator manufacturing excellence



## Bolt Electric - Edge Mount Limited Space Trim Tab Kits (12V)

CONTROLS SOLD SEPARATELY



Designed with an adjustable upper hinge for transoms with limited vertical space. Tabs turn up for added strength and feature piano-hinged backing plates.

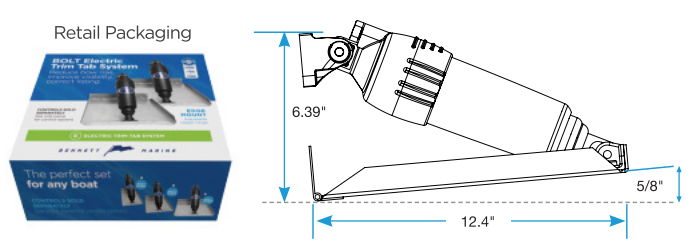
### Kits Include:

- (2) 12-volt adjustable upper hinge actuators with 6ft. wire harnesses and waterproof connectors (BEA3000)
- (2) Stainless steel trim planes (tabs) and mounting plates
- (2) 20ft. wire harnesses with waterproof connectors (BAW2020)

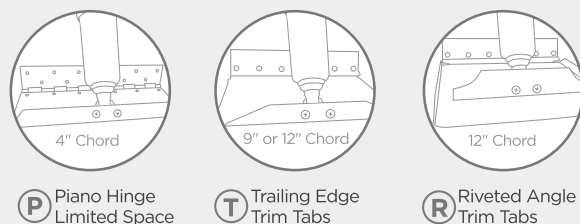
PN#	SPAN/CHORD	*TAB	RETAIL BOX
BOLT612ED	6"x12"	(T)	✓
BOLT912ED	9"x12"	(T)	✓
BOLT1212ED	12"x12"	(T)	✓

### Features Include:

- Requires less than 6.5" of vertical transom space to install
- Superior seal design inspired by over 50 years of Bennett's proven success in actuator manufacturing excellence

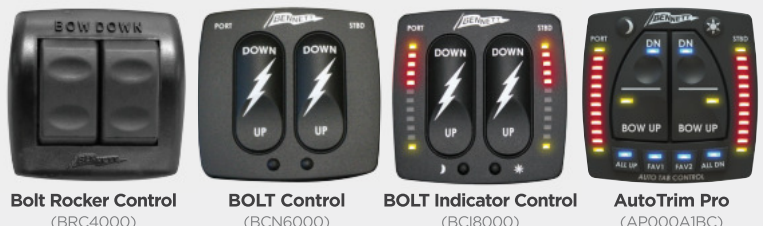


### \* Tab-style options:



### Helm Control Options (Sold separately)

See page 8 for detailed control information





## Lenco-to-BOLT Upgrade Conversion Kit (12V)

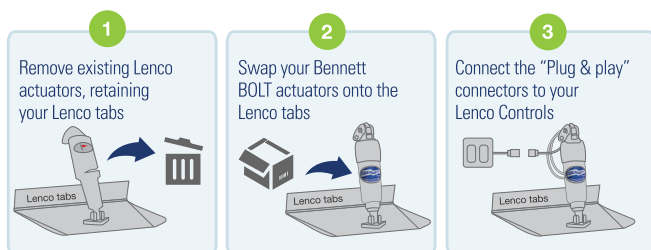
CONTROLS & TABS SOLD SEPARATELY



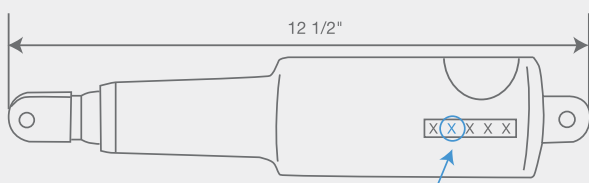
This kit includes everything necessary for a cost-effective, quick and easy upgrade from Lenco actuators to Bennett's exceptionally durable and dependable actuators. Bennett electric actuators are built to last, backed by a lifetime limited warranty.

- \* Works with Lenco "Standard Mount", "Standard Performance", and "Edge Mount" systems
- "Plug and play" connection to your existing standard Lenco controls
- Simply replace the Lenco actuators with Bennett Bolt actuators using the existing drill holes
- Easy installation with no new holes to drill. Keep your existing trim tabs
- Actuator lifetime limited warranty

PN #	DESCRIPTION
BOLTLKCON	Lenco-to-Bolt Upgrade Kit (Controls & tabs not included)



### \* Determining compatibility with your existing Lenco actuators



## Bennett Hydraulic-to-Bolt Electric Conversion Kit (12V)

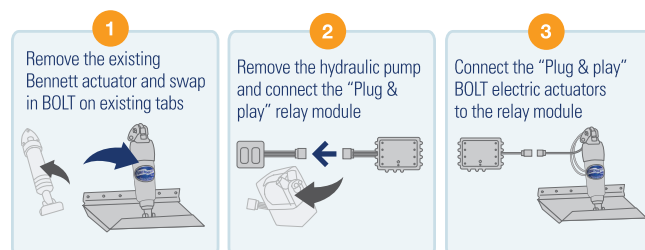
CONTROLS & TABS SOLD SEPARATELY



All you need for a quick and easy conversion from Bennett hydraulic actuators to Bennett BOLT electric actuators. BOLT actuators are exceptionally durable and dependable, backed by a lifetime limited warranty.

- Quick and easy conversion from standard Bennett hydraulic single actuator systems (A1101A & A1101ARC) using your existing wiring, rocker switch and trim tabs
- No rewiring or drilling of new holes required
- "Plug and play" connection to your existing standard Bennett Rocker Switch
- Equipped with Auto Tab Retraction and Diagnostics Relay Module
- Actuator lifetime limited warranty

PN #	DESCRIPTION
HYDBOLTCON	Hydraulic-to-Bolt Conversion Kit (Controls & tabs not included)
BOLTLT	Bolt Kit with fixed Upper Hinges (Controls & tabs not included)
BOLTLTADJ	Bolt Kit with adjustable Upper Hinges (Controls & tabs not included)



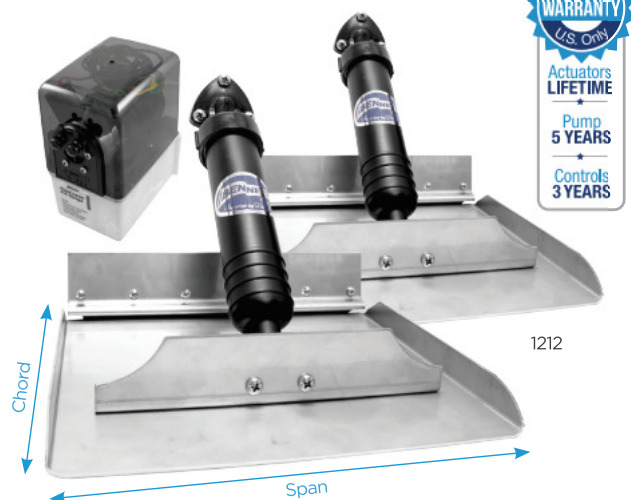
\* Bennett Lenco-to-BOLT Upgrade Conversion Kit is compatible with Lenco "Standard Mount", "Standard Performance", and "Edge Mount" systems. To determine whether your Lenco actuators meet the compatibility requirements, locate the identification stamp (available since approximately May 2008).

The actuator type is indicated by the second number in the 5-digit code. Lenco actuators with either "A", "B" or "G" indicated as the second digit in the 5-digit code sequence are compatible with the Bennett Lenco-to-BOLT Upgrade Kit. Short stroke Lenco actuators (11-3/8" and 10-7/8" actuator length), or long stroke Lenco actuators (14" and 13" actuator length) are NOT compatible.



# Standard (Classic) & Sport Hydraulic Trim Tab Kits

## Standard & Sport Trim Tab Kits



Hydraulic trim tabs are known for power, precision and durability. Get the most from your boat, no matter what the load, speed or sea conditions. Using the helm control, you can adjust the tabs individually or in unison to create the perfect cruising attitude. Increase speed and fuel economy, smooth a rough ride and get on plane faster.

### Kits Include:

- (2) Trim plane assemblies
- (2-4) Hydraulic actuators (A1101A)
- (1) Hydraulic Power Unit (V351HPU1)
- Hydraulic tubing and hardware
- Optional Helm Control

### Features Include:

- Get on plane fast, and stay on plane at intermediate speeds
- Correct listing and uneven loads
- Improve visibility and safety
- Reduce pounding and eliminate porpoising
- Increase speed and fuel efficiency
- Low maintenance, long-term value, and easy to service
- Exclusive transom mount inter-locking tab design
- Bottom-mount and piano hinge mounts are available for custom order

### Retail Packaging



## Kits Without Controls Included

PN#	SPAN/CHORD	*TAB	*ACT.	RETAIL BOX
129	12"x9"	T	✓	✓
189	18"x9"	T	✓	✓
249	24"x9"	T	✓	✓
309	30"x9"	T	✓	
369	36"x9"	T	✓	
429	42"x9"	T	✓	
489	48"x9"	T	✓	
549	54"x9"	T	✓	
1212	12"x12"	R	✓	✓
1812	18"x12"	R	✓	✓
2412	24"x12"	R	✓	
3012	30"x12"	R	✓	
3612	36"x12"	R	✓	
4212	42"x12"	R	✓	
4812	48"x12"	R	✓	
5412	54"x12"	R	✓	
6012	60"x12"	R	✓	
6612	66"x12"	R	✓	
7212	72"x12"	R	✓	

\*Actuators per tab

## Complete Kits With Rocker Control



PN#	SPAN/CHORD	*TAB	*ACT.	RETAIL BOX
M80	8"x10"	S	✓	✓
M120	10"x12"	S	✓	✓
129E	12"x9"	T	✓	✓
189E	18"x9"	T	✓	✓
249E	24"x9"	T	✓	✓
309E	30"x9"	T	✓	
369E	36"x9"	T	✓	
429E	42"x9"	T	✓	
489E	48"x9"	T	✓	
549E	54"x9"	T	✓	
1212E	12"x12"	R	✓	✓
1812E	18"x12"	R	✓	✓
2412E	24"x12"	R	✓	
3012E	30"x12"	R	✓	
3612E	36"x12"	R	✓	
4212E	42"x12"	R	✓	
4812E	48"x12"	R	✓	
5412E	54"x12"	R	✓	
6012E	60"x12"	R	✓	
6612E	66"x12"	R	✓	
7212E	72"x12"	R	✓	

\*Actuators per tab

## Complete Kits With Electronic Indicator



PN#	SPAN/CHORD	*TAB	*ACT.	RETAIL BOX
M80EIC	8"x10"	S	✓	✓
M120EIC	10"x12"	S	✓	✓
129EIC	12"x9"	T	✓	✓
189EIC	18"x9"	T	✓	✓
249EIC	24"x9"	T	✓	✓
1212EIC	12"x12"	R	✓	✓
1812EIC	18"x12"	R	✓	✓
2412EIC	24"x12"	R	✓	

\*Actuators per tab

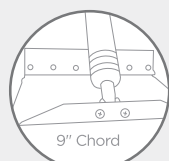
## Complete Kits With AutoTrim Pro



PN#	SPAN/CHORD	*TAB	*ACT.	RETAIL BOX
M80ATP	8"x10"	S	✓	✓
M120ATP	10"x12"	S	✓	✓
129ATP	12"x9"	T	✓	✓
189ATP	18"x9"	T	✓	✓
249ATP	24"x9"	T	✓	✓
1212ATP	12"x12"	R	✓	✓
1812ATP	18"x12"	R	✓	✓
2412ATP	24"x12"	R	✓	

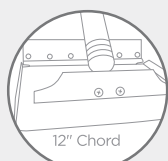
\*Actuators per tab

### \*Tab-style options:



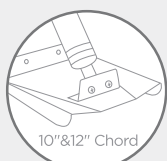
9" Chord

T Trailing Edge Trim Tabs



12" Chord

R Riveted Angle Trim Tabs



10" & 12" Chord

S Sport (M80/M120) Batwing Tabs

### Helm Control Options



Rocker Control (ES2000)



Indicator Control (EIC5000)



Auto Trim Pro (APO00A1HA)

See page 8 for detailed information and more set retrofit options.



## Performance Sport Tab Black Powder Coated Trim Tab Kits



Enjoy the sophisticated black powder coated finish of Performance Sport Tabs. Manufactured with heavy gauge reinforced stainless steel and powerful hydraulic actuators. Performance Sport Tabs combine strength, durability, and good looks to achieve your boat's maximum potential.

### Features Include:

- Get on plane fast. Stay on plane at intermediate speeds
- Correct listing and uneven loads
- Reduce pounding and eliminate porpoising
- Improve visibility and safety
- Low maintenance with long-term value

### Kits Include:

- (1) Control unit (Rocker, EIC, or ATP)
- (2) Trim plane assemblies
- (2-4) Hydraulic actuators
- (1) Hydraulic Power Unit
- Hydraulic tubing and hardware



### Complete Kits With AutoTrim Pro

PN#	SPAN/CHORD	*TAB	*ACT.	RETAIL BOX
ST9ATP	9"x12"	(T)	✓	✓
ST12ATP	12"x12"	(R)	✓	✓

\*Actuators per tab

### Complete Kits With Rocker

PN#	SPAN/CHORD	*TAB	*ACT.	RETAIL BOX
ST9	9"x12"	(T)	✓	✓
ST12	12"x12"	(R)	✓	✓
ST16	12"x16"	(R)	✓	✓

\*Actuators per tab

### Complete Kits With EIC

PN#	SPAN/CHORD	*TAB	*ACT.	RETAIL BOX
ST9EIC	9"x12"	(T)	✓	✓
ST12EIC	12"x12"	(R)	✓	✓
ST16EIC	12"x16"	(R)	✓	✓

\*Actuators per tab

## Premier Line Stainless Steel XPT, BXT & SST Trim Tab Kits



When only the best will do, Bennett's exceptional Premier Line Trim Tab systems are your only option. With superior design and engineering, Premier systems are built to the highest standards of durability, uniting form and function by employing the highest quality materials and the power of hydraulics.

### Features Include:

- Designed for luxury motor yachts, military, government, high-performance sport fishing, and commercial vessels
- No external hydraulic lines, wires or cables exposed to extreme marine environments
- All stainless steel construction assures highest resistance to corrosion from dissimilar metals
- Powerful dual acting hydraulics provide precision control of the stainless steel actuators
- Multiple actuator mounting points provide adjustability
- Backed by Bennett's legendary quality and customer service

### Kits Include:

- (1) Helm Control (EIC or AutoTrim Pro)
- (2) Compact dual acting Hydraulic Power Units
- (2-4) Stainless steel hydraulic actuators
- (2) Heavy duty 7 gauge trim planes
- Hydraulic tubing and hardware

### Complete Kits With EIC

PN#	SPAN/CHORD	*ACTUATORS
XPT1218EIC	12"x18"	✓
XPT1520EIC	15"x20"	✓
XPT1824EIC	18"x24"	✓
BXT	Custom	✓
SST	Custom	✓

\*Actuators per tab

### Complete Kits With AutoTrim Pro

PN#	SPAN/CHORD	*ACTUATORS
XPT1218ATP	12"x18"	✓
XPT1520ATP	15"x20"	✓
XPT1824ATP	18"x24"	✓
BXT	Custom	✓
SST	Custom	✓

\*Actuators per tab



# Helm Displays & Controls (Hydraulic Systems)

## Electronic Indicator Control Kit



Three features combined into one sophisticated control — soft-touch helm control, trim tab indicator and the auto tab retractor feature. Water resistant, highly accurate and features variable intensity LEDs for night or day.

### Kits Include:

- (1 or 2) EIC display (EIC001)
- (1) 12V EIC Relay Module (EIC101 or EIC102)
- (2) Upper hinge sensors with 10' wire (EIC901P and EIC901S)
- (1) 20' EIC cable (EIC201)
- (1) EIC hardware pack (EIC501)

### Features Include:

- Water resistant keypad and connectors ensure years of trouble free operation
- Features a relay module mounted near the transom which simplifies installation by reducing the number of wires to run to the helm
- Automatic trim tab retractor protects tabs from damage

Additional display, wiring, and junction box included with dual station kits



PN#	DESCRIPTION
EIC5000	Electronic Indicator Control Kit – 12V
EIC5000A	EIC with Bridge Control (Two displays)
EIC50002	Electronic Indicator Control Kit – 24V
EIC5000A2	EIC Kit with Bridge Control (Two displays) – 24V

## NMEA2000

See the position of your trim tabs on your NMEA 2000 compatible multi-function display or gauge, GPS/chartplotter or sonar.

### Kits Include:

- (1) White plastic clip (ATC9)
- (6) Red butt connectors (THB6)
- (1) NMEA1 Sensor (EP30)
- (2) Upper Hinges with coil (CC3003S and CC3003P)
- (2) sensor rods

Controls not included



## Euro-Style Rocker Switch Control



This control is ergonomically designed, water resistant and provides a distinctive “click” when the trim tabs are engaged.

PN#	DESCRIPTION
ES2000	Euro-style Rocker Switch Control

## Auto Tab Control Kit



Add auto tab control to your existing trim tab controls! The Auto Tab Control dials in the perfect running attitude. Just turn it on and it does the rest. The ATC constantly monitors your boat's position and uses your trim tabs to maintain a perfect cruising attitude.

### Kits Include:

- (1) ATC Control Unit (AC3400)
- (1) ATC Keypad (AC3250)
- (1) Relay Module
- (1) 6' ATC Keypad Cable (AC3250)
- (1) ATC Hardware (AC3200)
- (1) 6' ATC Wire Harness (WH3006)
- (1) ATC Power Pigtail (AC3121)
- (1) Pigtail for Wire Harness (PT109)

### Features Include:

- Saves fuel and creates the perfect ride
- Easy plug and play installation

PN#	DESCRIPTION
AC3000	ATC System 12V
AC3000A	ATC w/Bridge 12V
AC30002	ATC System 24V
AC30002A	ATC w/Bridge 24V
AC3EIC	ATC System for EIC 12/24V
AC3EICA	ATC System for EIC w/Bridge

Additional display and hardware included with dual station kits



## BOLT Soft-Touch Control



BCI8000 Helm Control

BCN6000 Helm Control

Complete your Bolt Trim Tab System with the waterproof, silicone soft-touch BOLT control, available with or without tab position indication.

PN#	DESCRIPTION
BCI8000	Bolt Soft Touch Helm Control with Indication
BCN6000	Bolt Soft Touch Helm Control

### Kits Include:

- (1) Bolt Helm Control (BCI8700 or BCN6700)
- (1) Relay Module (BCI8500 or BCN6500)
- (1) Hardware Bag



Retail Packaging

### Features Include:

- Auto Tab Retractor (Tabs retract when ignition shuts off)
- Water resistant keypad and connectors
- Completely "Plug and play", no need to run additional wiring back to the transom for easy installation
- Diagnostics Relay Module incorporates LED status indicators simplifying installation and troubleshooting

## BOLT Rocker Control



Retail Packaging

This control is ergonomically designed, water resistant and provides a distinctive "click" when the trim tabs are engaged.

### Features Include:

- Distinctive click action for precise trim tab adjustment
- Economical and easy installation

PN#	DESCRIPTION
BRC4000	Bolt Rocker Control

## All-in-one Trim Tab Control System



AutoTrim Pro is an all-in-one trim tab control system designed for boats of all sizes—packing in a boatload of essential features into an easy-to-use, space-saving keypad. Reduce bow rise, improve visibility, correct listing—automatically.

PN#	DESCRIPTION
AP000A1HA	AutoTrim Pro for Hydraulic Systems
AP000A1BC	AutoTrim Pro for Electric Systems

### Kits Include:

- (1) ATP Helm Display (ATPDISP)
- (1) ATP Control Unit (ATPHYDCTRL or ATPBOLTCTRL)
- (1) 25' Extension Cable
- Required Hardware



Retail Packaging

### Features Include:

- Compatible with Bennett hydraulic or electric trim tab systems, and most non-Bennett trim tab systems.
- Auto Trim Tab Control with favorite buttons
- Take manual control of your trim tabs any time
- Trim tab position indication with adjustable L.E.D.s
- Auto tab retraction when ignition is powered off
- OEM Customizable response time

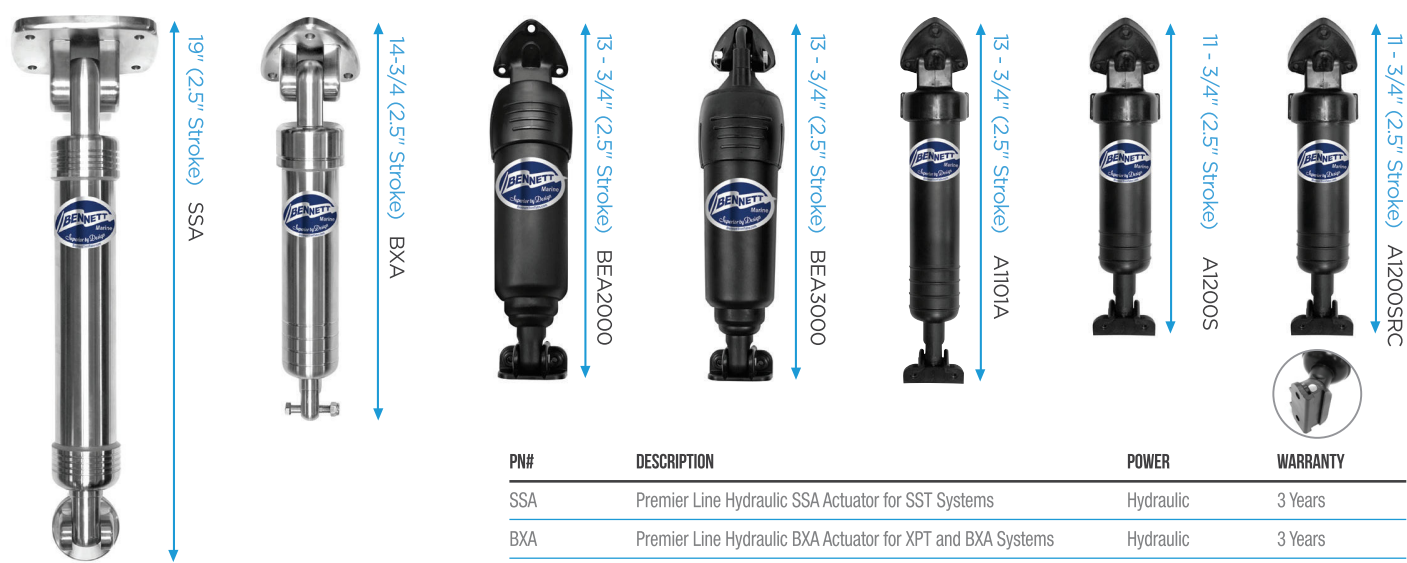
Watch the video  
[BennettTrimTabs.com/ATP](http://BennettTrimTabs.com/ATP)

Put Your Trim Tabs on Cruise Control





# Actuators & Trim Plane Assemblies



## Actuators

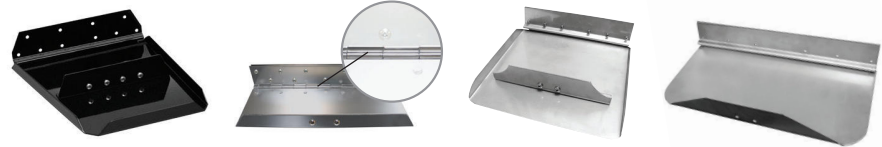
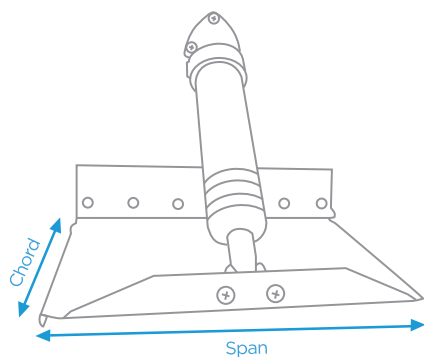
Bennett actuators are built to last, maintenance-free, and backed by Bennett's legendary support. All models provide a 2.5" stroke.

PN#	DESCRIPTION	POWER	WARRANTY
SSA	Premier Line Hydraulic SSA Actuator for SST Systems	Hydraulic	3 Years
BXA	Premier Line Hydraulic BXA Actuator for XPT and BXA Systems	Hydraulic	3 Years
BEA2000	Bolt Electric Actuator with Fixed Upper Hinge	Electric	Lifetime Limited
BEA3000	Bolt Electric Actuator with Adjustable Upper Hinge	Electric	Lifetime Limited
A1101A	Standard Length Hydraulic Actuator	Hydraulic	Lifetime Limited
A1200S	Short Hydraulic Actuator	Hydraulic	Lifetime Limited
A1200SRC	Short Hydraulic Actuator w/Rivet Clearance (M80/M120)	Hydraulic	Lifetime Limited

**Actuator variations not shown:** A1101EX (w/ External line), A1101CP or A1101CS (Actuator w/10' Sensor Wire for TPI or NMEA), A1101CSEIC or A1101CPEIC (Actuator w/ sensor 10' red wire - for EIC), SLT actuators

## Trim Plane Assemblies

Bennett Marine's durable and dependable trim planes are made of high quality 12 or 14 gauge 304 stainless steel. Each trim plane assembly (for one side of the boat) includes a trim plane, hinge plate, and backing plate.



### Performance

PN#	SPAN/CHORD
TPAST9	12"x9"
TPAST12	12"x12"
TPAST16P	12"x16"
TPAST16S	12"x16"

### Piano Hinge

PN#	SPAN/CHORD
TPA124	12"x4"



### Sport Tabs (M80/M120)

PN#	SPAN/CHORD
TPAM80	8"x10"
TPAM120	10"x12"

### Riveted Angle

PN#	SPAN/CHORD
TPA1212	12"x12"
TPA1812	18"x12"
TPA2412	24"x12"
TPA3012	30"x12"
TPA3612	36"x12"
TPA4212	42"x12"
TPA4812	48"x12"
TPA5412	54"x12"
TPA6012	60"x12"
TPA6612	66"x12"
TPA7212	72"x12"

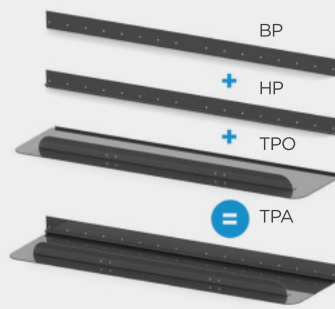
### Trailing Edge

PN#	SPAN/CHORD
TPA129	12"x9"
TPA189	18"x9"
TPA249	24"x9"
TPA309	30"x9"
TPA369	36"x9"
TPA429	42"x9"
TPA489	48"x9"
TPA549	54"x9"

### Assembly Components

Trim Plane Assemblies (TPA) consist of 3 main components which can all be ordered separately. When ordering separately, simply swap "TPA" with the below acronyms. For example: *HP12* is a 12" Backing Plate Only.

- **BP** - Backing Plate Only
- **HP** - Hinge Plate Only
- **TPO** - Trim Plane Only



Self-Leveling Tabs (SLT)



A simple, durable and affordable trimming solution for smaller boats. Quick and easy installation with nothing to do inside the boat – just mount the actuators and trim tabs on the transom and enjoy the benefits.

Kits Include:

- (2) 14 gauge stainless steel tabs with Bennett’s exclusive interlocking hinge
- (2) Strong, durable actuators
- All stainless steel hardware

Features Include:

- Three mounting options to easily change lift
- Plane at lower speeds
- Improve fuel efficiency
- Eliminate porpoising and chine walking
- Improve you hole shot
- Reduce engine laboring and improve fuel efficiency

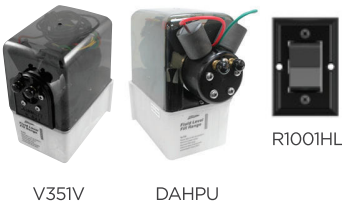


Retail Packaging

PN#	DESCRIPTION
SLT6	SLT6 - Small boats up to 17 (60 lb. Spring)
SLT10	SLT10 - Small boats 17' and up (90 lb. Spring)



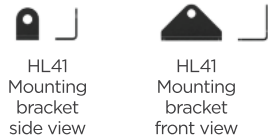
Hatch Lift Systems



Using proven hydraulic technology, Bennett Hatch Lifter Systems raise hatches at the push of a button. The operation is quiet, smooth and responsive with no cylinder drift.

Features Include:

- 250 lbs. of vertical lifting capability
- Stainless steel shaft, inside a black anodized aluminum cylinder
- Dual cylinder systems can move simultaneously or independently



Single Acting Cylinders

PN#	DESCRIPTION
HL12C	12" Stroke Single Acting Cylinder
HL18C	18" Stroke Single Acting Cylinder
HL24C	24" Stroke Single Acting Cylinder

Dual Acting Cylinders

PN#	DESCRIPTION
HL12CDA	12" Stroke Dual Acting Cylinder
HL18CDA	18" Stroke Dual Acting Cylinder
HL24CDA	24" Stroke Dual Acting Cylinder

Common Hatch-lifter Replacement Components

PN#	DESCRIPTION
V351V	1-valve Hydraulic Power Unit (12V)
DAHPU	Dual Acting Hydraulic Power Unit (12V)
RS1001HL	Single Rocker Switch with Bezel
MKHL1000	Cylinder Mounting Kit (Includes mounting brackets & hardware)

For a complete list of hatch lifter sets, visit [BennettTrimTabs.com](http://BennettTrimTabs.com)



# Common Replacement Parts & Accessories



A1103



A1103EX



A1101A



A1109



A1113



A1115



A1117



A1200SRC



AC3250



AC32506/AC325022



AC3400



AR512



AR524



ATC9



ATPHYDCTRL



ATPSENSTD



BAW20(05'-20')



BC18500



BCN6700



BEA2100



BHW40(03'-10')



EIC001



EIC101 / EIC102



EIC201 (20'-40')



EIC301



EIC601



EIC701



EIC801



H1170A



H1170B



H1171-(2'-5'')



H1172



H1174



H1178



H1179



PT109 / PT110



PT950P



PT950S



RM12 / RM24



T112520



VP1135G



VP1135G24V



VP1135R



VP1135R24V



VP1138



VP1139



VP1140



VP1144



VP1146



VP1154



VP1159



VP1160



VP1161



VP351HPU1



PN#	DESCRIPTION	*DSKIT
A1103	Hydraulic Upper Hinge with O-ring	✓ (2)
A1103EX	Hydraulic Actuator Upper Hinge - External Line	
A1101A	Standard Length Hydraulic Actuator	✓ (2)
A1109	Piston with O-ring	
A1113	Hydraulic Actuator Lower Hinge	✓ (10)
A1115	Lower Hinge Pin	✓ (20)
A1117	Small Actuator Piston with O-ring	
A1120	Actuator Upper Hinge O-Ring	✓ (12)
A1121	Actuator Piston O-Ring	✓ (12)
A1200SRC	Small Hydraulic Actuator	✓ (2)
AC3250	ATC Keypad	
AC32506	ATC 6' Keypad Cable	
AC325022	ATC 22' Keypad Bridge Cable	
AC3400	ATC Control Unit	
AR512	Auto Tab Retractor 12V (Black Podding)	
AR524	Auto Tab Retractor 24V (Tan Podding)	
ATC9	White PVC Clip for Actuators	✓ (6)
ATPBOLCTRL	AutoTrim Pro Control Unit (Electric)	
ATPDISP	AutoTrim Pro Helm Display	
ATPDISPBR	AutoTrim Pro Helm Display (Bridge)	
ATPHYDCTRL	AutoTrim Pro Control Unit (Hydraulic)	
ATPSENSTD	AutoTrim Pro Standard Sensor Kit	
BAW20(05'-20')	5', 10', 15', or 20' Wire Harness	
BCI8500	BCI Relay Module (Black Cover)	
BCN6500	BCN Relay Module (White Cover - Not Shown)	
BCN6700	Helm Keypad (Non-Indicator)	
BEA2100	Bolt Actuator Upper Hinge Spacer	
BHW40(03'-10')	3', 5', 7', or 10' Helm Keypad Wire Ext.	
CC3003-P	Actuator Upper Hinge w/Coil - Port	✓ (1)
CC3003-S	Actuator Upper Hinge w/Coil - Stbd.	✓ (1)
EH1071	#10 x 1-1/4" Full Thread Screw	✓ (50)
EIC001	EIC Control/Display	
EIC101	EIC Relay Module 12V (Black Podding)	
EIC102	EIC Relay Module 24V (Tan Podding - Not Shown)	
EIC201 (20'-40')	EIC 20', 25', 30', 35' or 40' Wire Harness	
EIC301	EIC 4' Wire Harness	
EIC601	EIC Bridge Hardware Pack	
EIC701	EIC Bridge Junction Box	
EIC801	EIC Bridge Wire Harness 20'	✓ (2)

PN#	DESCRIPTION	*DSKIT
EIC901P	EIC Port Upper Hinge w/ 10' Sensor Wire	✓ (1)
EIC901S	EIC Stbd Upper Hinge w/ 10' Sensor Wire	✓ (1)
ES2000	Hydraulic Euro-style Rocker Switch	✓ (1)
H1170A	Hydraulic Trim Tab Hardware Pack	✓ (1)
H1170B	Dual Actuator Hardware Pack	✓ (1)
H1171-(3,4)	3" & 4" Pipe Nipples (2" & 5" also available)	✓ (2) ea.
H1172	Female Elbow	✓ (12)
H1174	#14 x 1-1/2" Full Threaded Screw	✓ (30)
H1175	1/4 - 20 x 3/4" Machine Screw	✓ (20)
H1176	20 Amp Fuse	
H1178	Fuse Holder	
H1179	Mounting Bracket for HPU	✓ (2)
PT109	Pigtail for Wire Harness	✓ (2)
PT110	Pigtail for HPU or Control	✓ (2)
PT950P	EIC Port Pigtail	✓ (3)
PT950S	EIC Starboard Pigtail	✓ (3)
RM12	Relay Module 12V (Black Podding)	
RM24	Relay Module 24V (Tan Podding - Not Shown)	
T112520	Hydraulic Tubing (20')	✓ (2)
T1126	Brass Line Tee Fitting	✓ (6)
T1127	Nut with Ferrule	✓ (24)
VP1135G	Solenoid Valve 12V- Green Wire (Stbd.)	✓ (2)
VP1135G24V	Solenoid Valve 24V- Green Wire (Stbd.)	
VP1135R	Solenoid Valve 12V - Red Wire (Port)	✓ (2)
VP1135R24V	Solenoid Valve 24V - Red Wire (Port)	
VP1138	Lexan Cover	✓ (1)
VP1139	Fluid Reservoir	
VP1140	Filler Plug	
VP1141	Hex Retainer	
VP1142	Motor Strap	
VP1144	HPU Face Plate	
VP1146	1/8" Pipe to 1/4" Pipe Tube Connector	✓ (5)
VP1154	#8 x 3/4" Phil Pan Sheet Metal Screw	
VP1159	Valve Seat with O-Ring	✓ (20)
VP1160	HPU Valve Spring	✓ (10)
VP1161	HPU Valve Plunger	✓ (10)
VP351HPU1	Hydraulic Power Unit (Pump)	✓ (1)
WH100022	Standard 22' Wire Harness	✓ (2)
WH3006	ATC 4-Color Wire Harness 6'	

## Dealer Service Kit (PN# DSKIT)

Stock up and save with the Bennett Dealer service kit which contains everything a servicing dealer needs to repair almost any problem. It's an affordable way to acquire some of the most common hydraulic trim tab system parts with a combined retail value of more than \$2000. Items are individually packaged and bar coded—ready for resale.

**\*See the table above for all included parts**

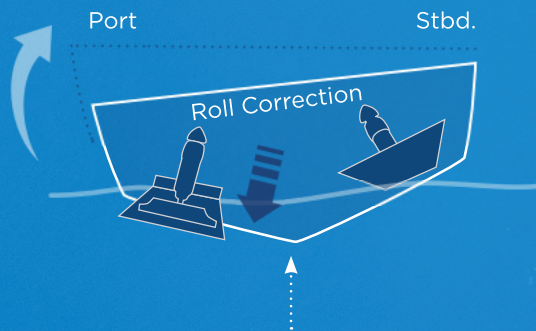
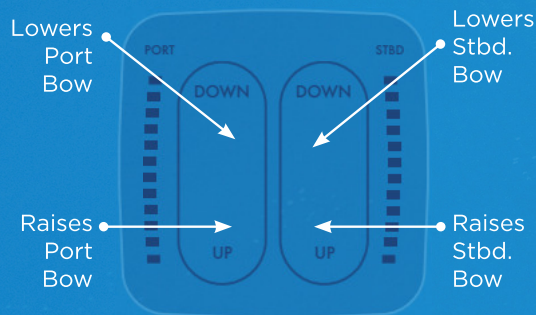




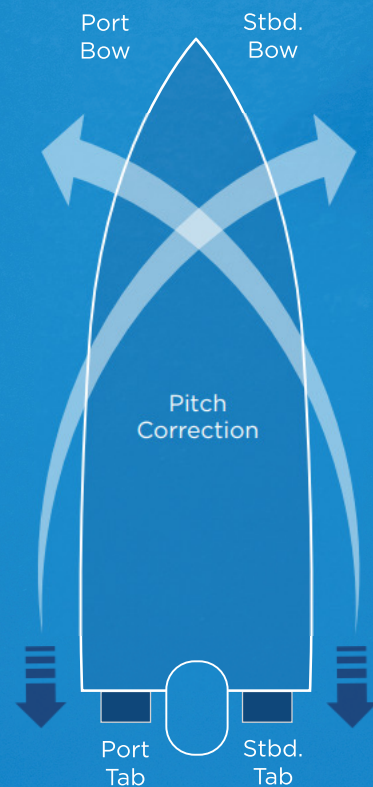
# A BETTER

Properly sized trim tabs improve the performance of your boat by adjusting the running angle of your vessel. Bennett Marine trim tabs help you get on plane faster, correct listing to one side, improve visibility and increase your fuel efficiency.

- Get you up on plane quickly
- Increase performance and fuel efficiency
- Increase visibility
- Adjust the boat's attitude for changes in speed, sea conditions and shifting weight
- Correct listing on either side of the boat



When the port tab is lowered independently, an upward force at the port stern of the boat is created. The inverse applies when lowering the stbd. tab independently.



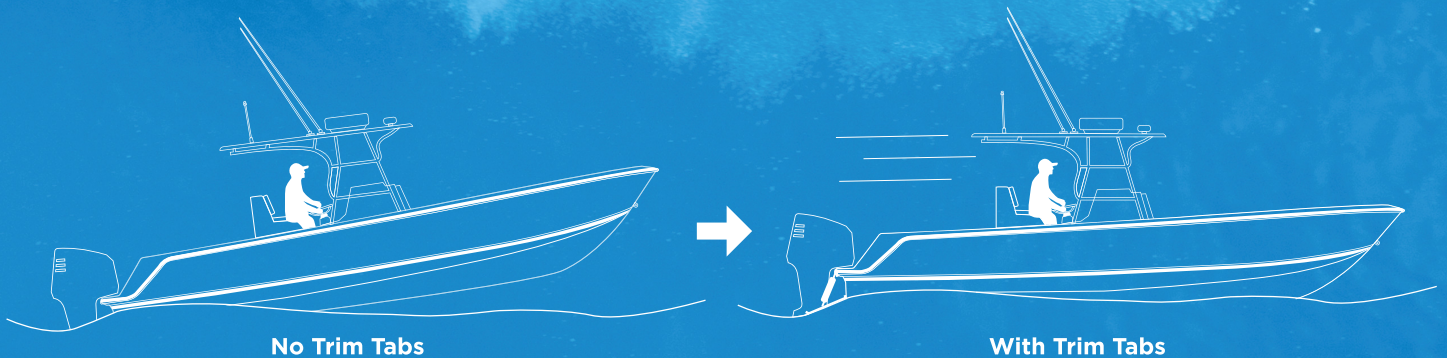
## The Undisputed Leader

In 1960, Charles Bennett invented the first adjustable trim tab system. Since then, we've continued to push forward and have introduced a myriad of industry-changing innovations, like auto tab control, trim tab position indication, and NMEA2000 integration.





# RIDE



## How Trim Tabs Work

When the tabs are deployed downward, the water force on the trim tab surface creates upward pressure, raising the stern and lowering the bow. The port trim tab lowers the starboard bow, and the starboard trim tab lowers the port bow. The control is intuitively wired so that all you have to do is press the button in the direction you want the bow to move.



We've worked with the best boat-builders in the world to create custom solutions, and back all of our products with the best warranty in the industry. Bennett Marine is the only manufacturer that offers both electric and hydraulic systems.





BENNETT  MARINE



ENJOY  
THE RIDE

[BennettTrimTabs.com](http://BennettTrimTabs.com)

Bennett Marine | 550 Jim Moran Boulevard, Deerfield Beach FL, 33442 | (954)427-1400